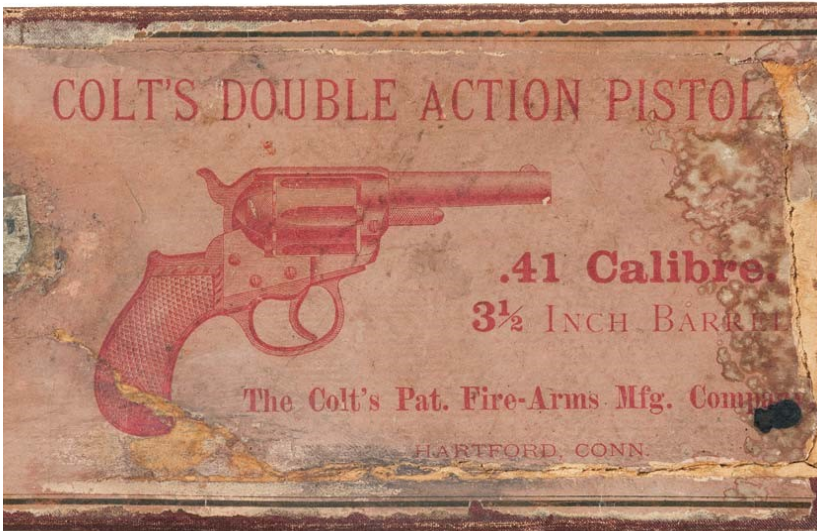


# MODEL 1877

## DOUBLE ACTION REVOLVER

1877 – 1909



The original box of a .41 caliber Colt double action revolver

The Model 1877 was Colt's first double-action weapon. The .38 caliber "Lightning" and .41 caliber "Thunderer" sold well but were problematic. They often malfunctioned with exposure to weather, dust, and dirt and had an intricate design that was often unreparable.

<b>Caliber:</b>	38 long and short Colt center fire cartridge (Lightning) or 41 long and short Colt center fire cartridges (Thunderer) 32 long and short Colt center fire cartridge (rare - only 200 made)
<b>Cylinder:</b>	6-shot
<b>Barrel:</b>	1 1/2"-6" without ejector and from 4 1/2" - 10" with ejector
<b>Finish:</b>	Blued with case hardened frame, nickel, gold and silver plating
<b>Grips:</b>	Checked one-piece rosewood grips standard, checkered hard rubber, ivory, pearl, and walnut available
<b>Weight:</b>	22 1/2 oz. (2 1/2" barrel); 23 oz. (3 1/2" barrel without ejector); 25 oz. (4 1/2" barrel); 27 oz. (6" barrel)
<b>Production:</b>	Approximately 166,849 produced



**Model 1877 Lightning, Cat. No. 3232**



**Model 1877 Thunderer, Cat. No. 3078**

Although production of this firearm continued into the 20<sup>th</sup> century, it was never adapted to smokeless powder. A warning against the use of smokeless powder was made with guns shipped from 1898 to 1909.

### Colt's Double Action Revolvers

Double action refers to the function of the trigger. While the single action needed to be cocked manually before pulling the trigger, the double action did both automatically. The double action was not a new design, but had not previously been produced by Colt.